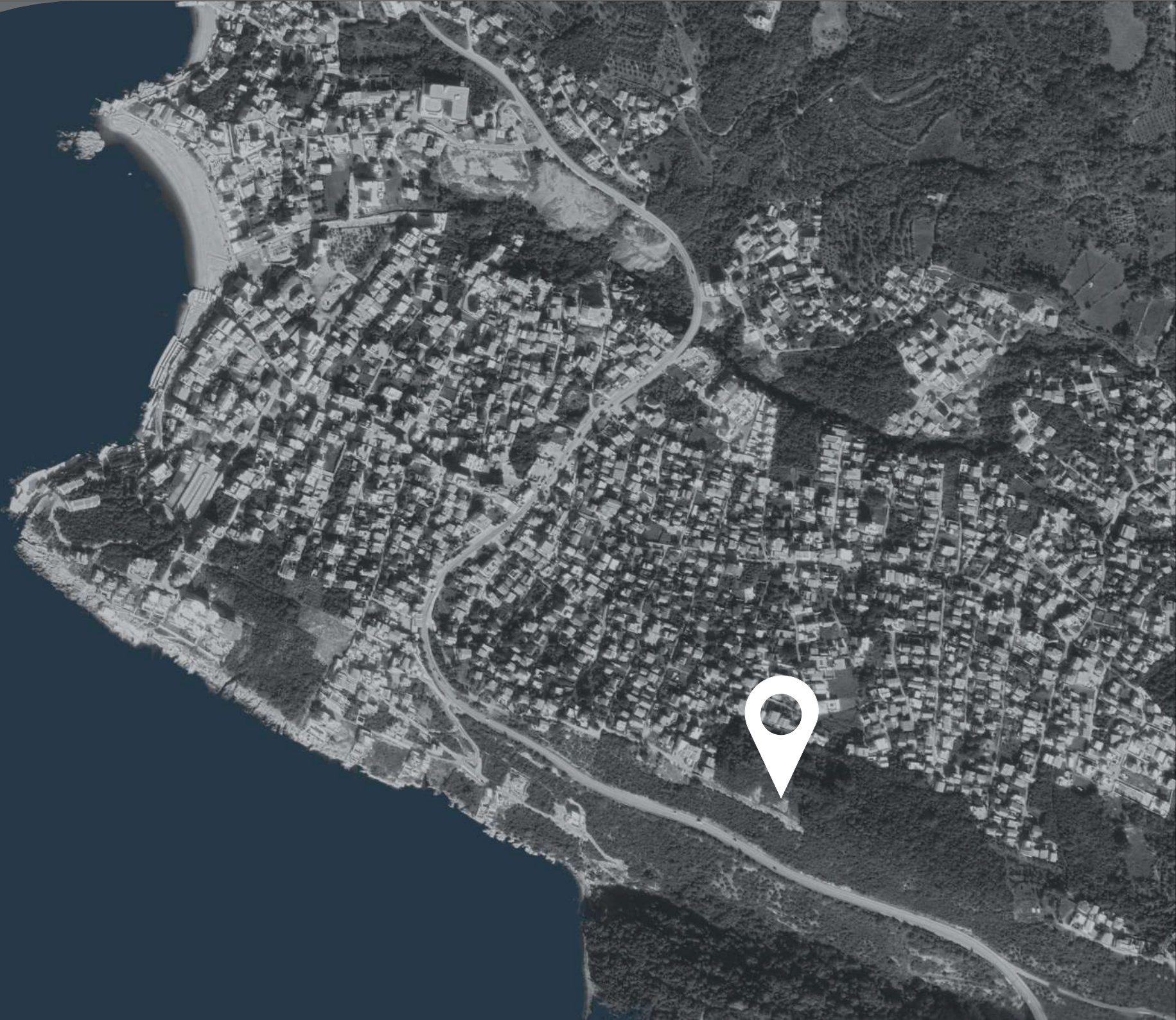


# UP

RESIDENCE





**UP RESIDENCE** je novi stambeni kompleks u naselju Dubrava, zamišljen kao oaza mira koja obezbjeđuje sve uslove za urban i udoban život. Nalazi se tik iznad Jadranske magistrale na dionici Bar-Ulcinj i osim modernog arhitektonskog rješenja i visokog kvaliteta izrade, karakteriše ga nesmetan pogled iz svakog stana, na plažu Veliki pijesak na jednoj strani i Uvalu Petovića, na drugoj.



+382/ 67-333-357 upgradnja@gmail.com up.gradnja Dubrava, Bar

## SADRŽAJ

<b>osnova prizemlja</b>	<b>01-02</b>
stan P/1	03-04
stan P/2	05-06
stan P/3	07-08
stan P/4	09-10
stan P/5	11-12
3D prikaz objekta	13-14
<b>osnova tipične etaže 1</b>	<b>15-16</b>
stan 1/1	17-18
stan 1/2	19-20
stan 1/3	21-22
stan 1/4	23-24
stan 1/5	25-26
3D prikaz objekta	27-28
<b>osnova tipične etaže 2</b>	<b>29-30</b>
stan 2/1	31-32
stan 2/2	33-34
stan 2/3	35-36
stan 2/4	37-38
stan 2/5	39-40
3D prikaz objekta	41-42



50 km



500 m



8 km



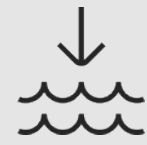
500 m



8 km

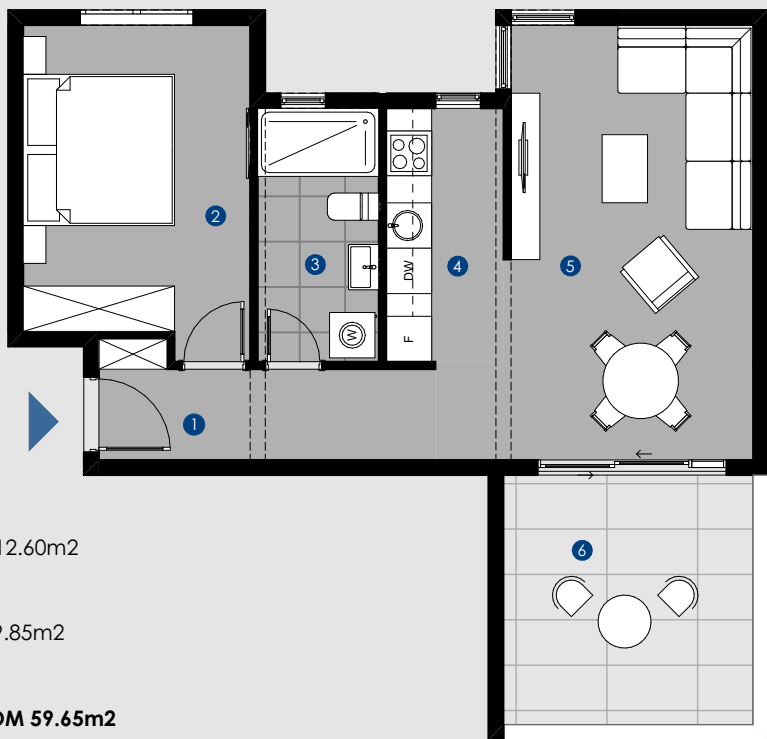
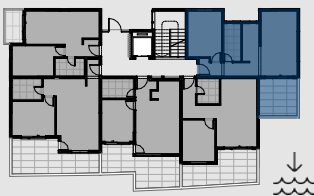


7 km



# P/1

59.65 M<sup>2</sup>



### STA P/1

- 1. HODNIK 5.70m<sup>2</sup>
- 2. SPAVAĆA SOBA 12.60m<sup>2</sup>
- 3. KUPATILO 5.40m<sup>2</sup>
- 4. KUHINJA 5.20m<sup>2</sup>
- 5. DNEVNA SOBA 19.85m<sup>2</sup>

**UKUPNO 48.75m<sup>2</sup>**

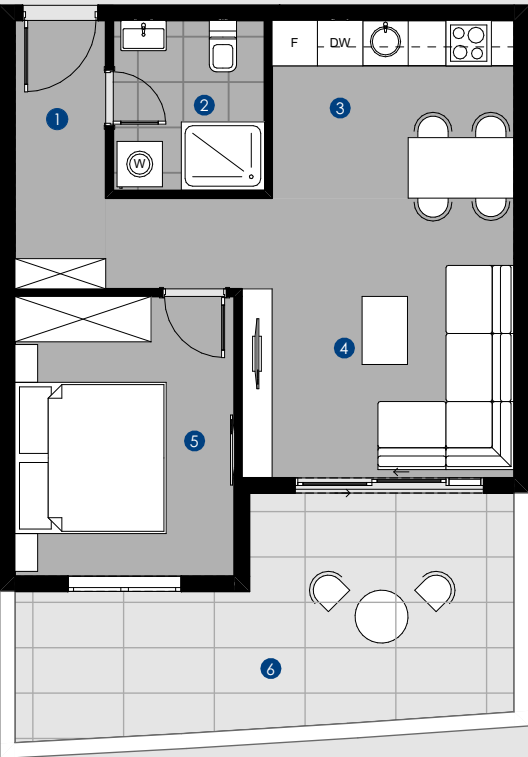
6. TERASA 10.90m<sup>2</sup>

**UKUPNO SA TERASOM 59.65m<sup>2</sup>**



# P/2

59.00 M2

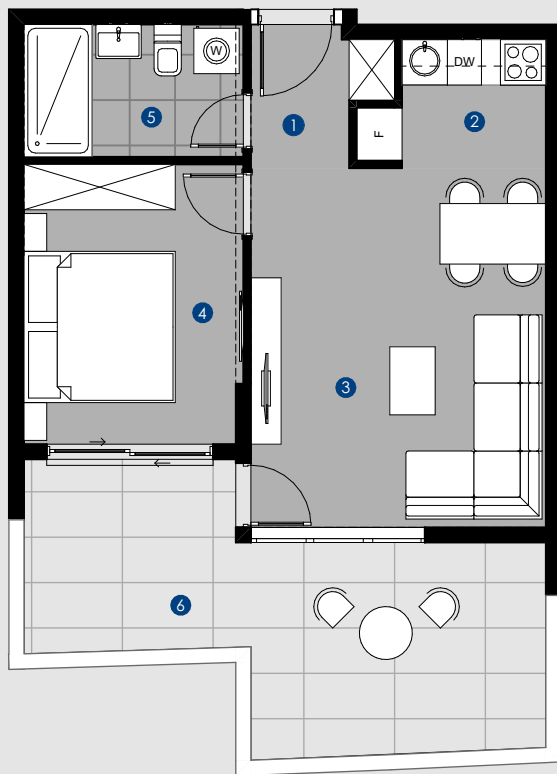
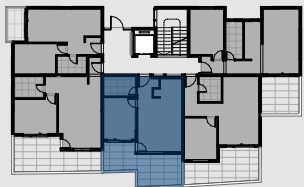


- STAN P/2**  
1.HODNIK 4.25m2  
2.KUPATILO 4.50m2  
3.KUHINJA 7.50m2  
4.DNEVNA SOBA 15.50m2  
5.SPAVAĆA SOBA 10.75m2  
**UKUPNO 42.50m2**  
6.TERASA 16.50m2  
**UKUPNO SA TERASOM 59.00m2**

prizemlje/ jednosoban stan

# P/3

59.00 M2



### STAN P/3

- 1. HODNIK 2.90m<sup>2</sup>
- 2. KUHINJA 3.65m<sup>2</sup>
- 3. DNEVNA SOBA 18.50m<sup>2</sup>
- 4. SPAVAĆA SOBA 10.65m<sup>2</sup>
- 5. KUPATILO 5.05m<sup>2</sup>

**UKUPNO 40.75m<sup>2</sup>**

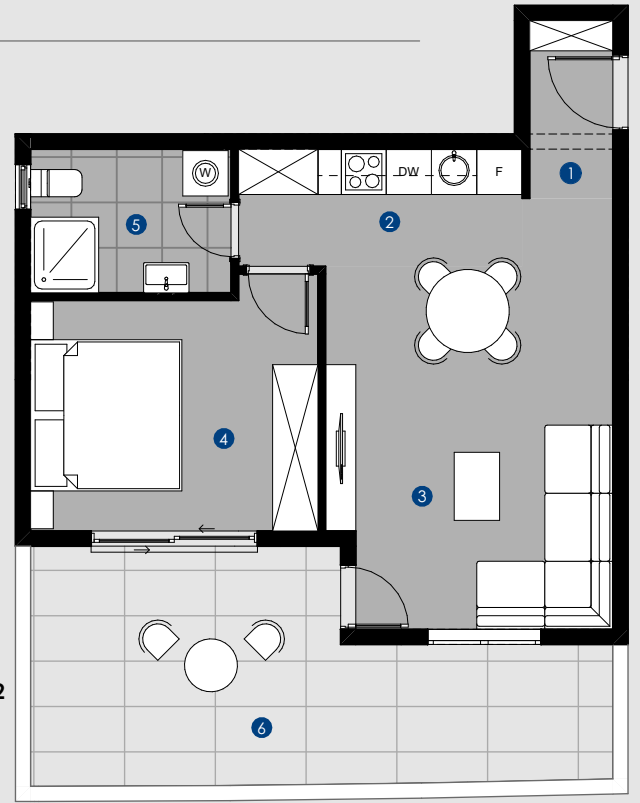
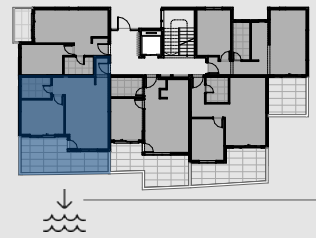
6. TERASA 18.25m<sup>2</sup>

**UKUPNO SA TERASOM 59.00m<sup>2</sup>**



# P/4

63.75 M2

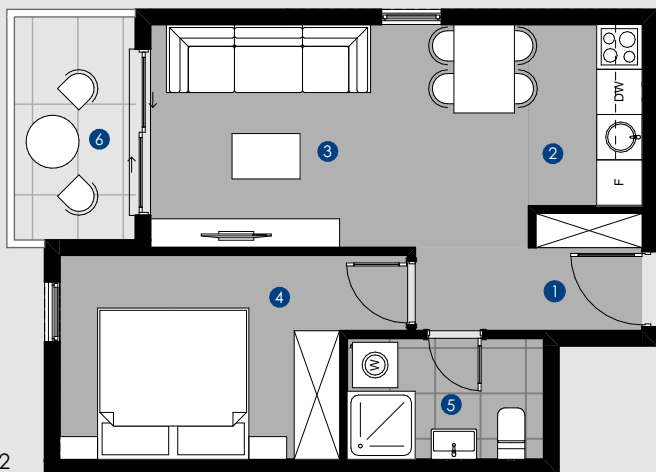


prizemlje / jednosoban stan



# P/5

42.00 M<sup>2</sup>



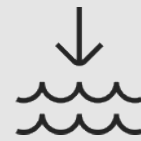
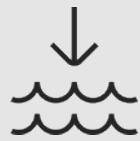
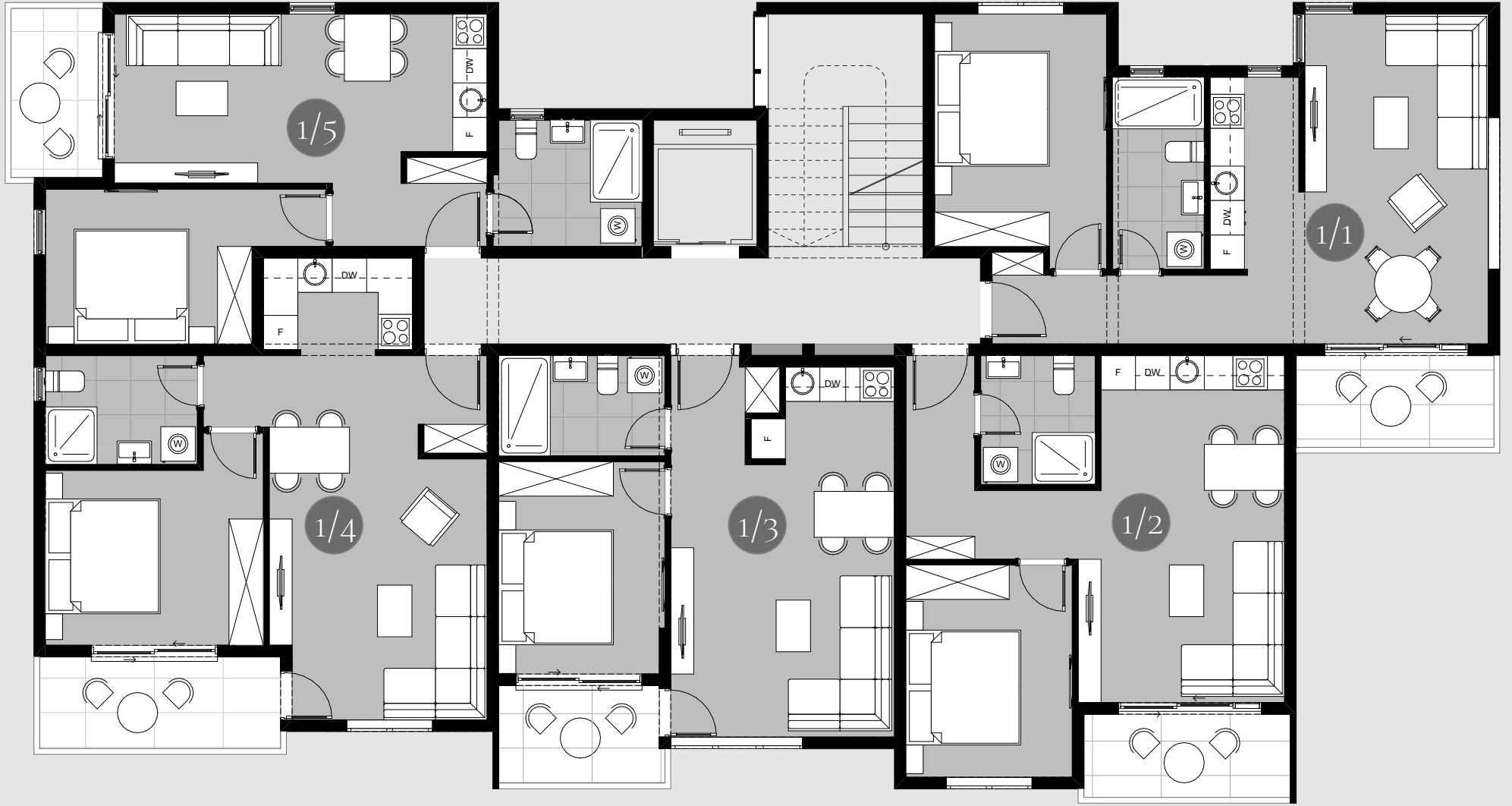
### STAN P/5

- 1. HODNIK 3.90m<sup>2</sup>
- 2. KUHINJA 3.60m<sup>2</sup>
- 3. DNEVNA SOBA 14.75m<sup>2</sup>
- 4. SPAVAĆA SOBA 10.90m<sup>2</sup>
- 5. KUPATILO 4.15m<sup>2</sup>
- 6. TERASA 4.70m<sup>2</sup>
- UKUPNO 37.30m<sup>2</sup>**
- UKUPNO 42.00m<sup>2</sup>**



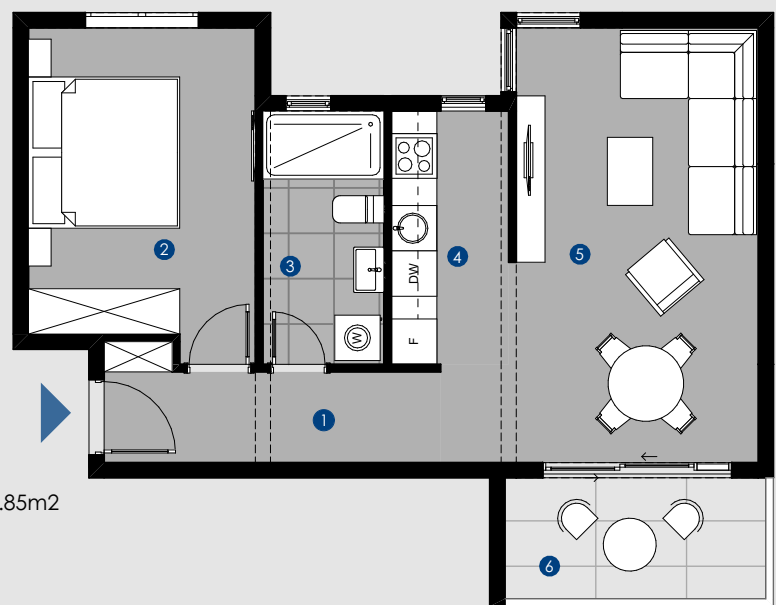
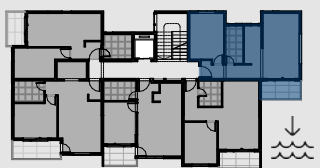
*Pogled za sva vremena*





1/1

54.25 M2

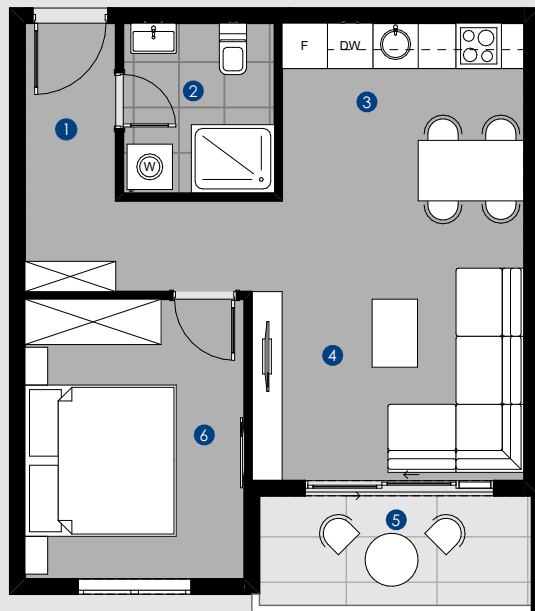
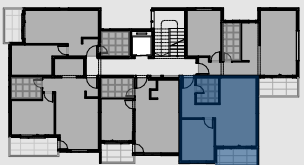


- STAN 1/1**
- 1. HODNIK 5.70m<sup>2</sup>
  - 2. SPAVAĆA SOBA 12.60m<sup>2</sup>
  - 3. KUPATILO 5.40m<sup>2</sup>
  - 4. KUHINJA 5.20m<sup>2</sup>
  - 5. DNEVNA SOBA 19.85m<sup>2</sup>
  - 6. TERASA 5.50m<sup>2</sup>
- UKUPNO 54.25m<sup>2</sup>**

tipična etaža 1 / jednosoban stan

# 1/2

47.70 M<sup>2</sup>



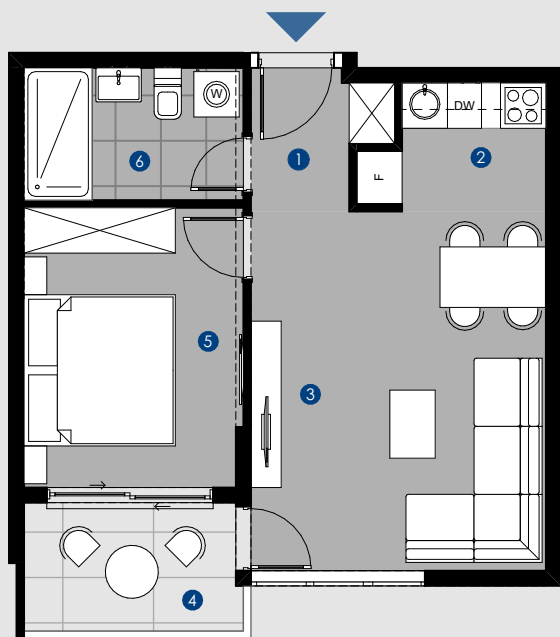
### STAN 1/2

- 1. HODNIK 4.25m<sup>2</sup>
  - 2. KUPATILO 4.50m<sup>2</sup>
  - 3. KUHINJA 7.50m<sup>2</sup>
  - 4. DNEVNA SOBA 15.50m<sup>2</sup>
  - 5. TERASA 5.20m<sup>2</sup>
  - 6. SPAVAĆA SOBA 10.75m<sup>2</sup>
- UKUPNO 47.70m<sup>2</sup>**



# 1/3

45.65 M<sup>2</sup>

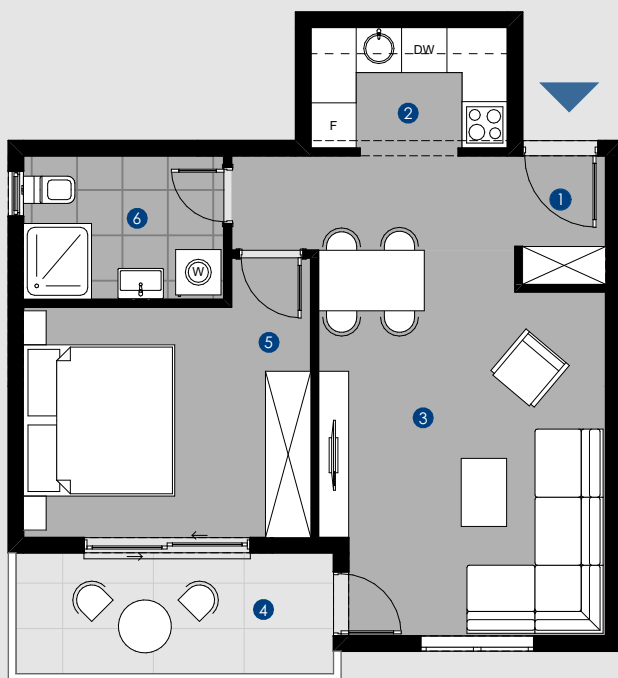
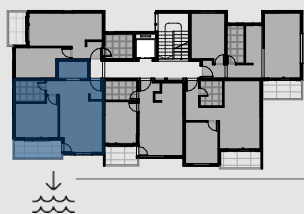


### STAN 1/3

- 1. HODNIK 2.90m<sup>2</sup>
  - 2. KUHINJA 3.70m<sup>2</sup>
  - 3. DNEVNA SOBA 18.50m<sup>2</sup>
  - 4. TERASA 4.80m<sup>2</sup>
  - 5. SPAVAČA SOBA 10.65m<sup>2</sup>
  - 6. KUPATILO 5.10m<sup>2</sup>
- UKUPNO 45.65m<sup>2</sup>**

# 1/4

53.20 M<sup>2</sup>

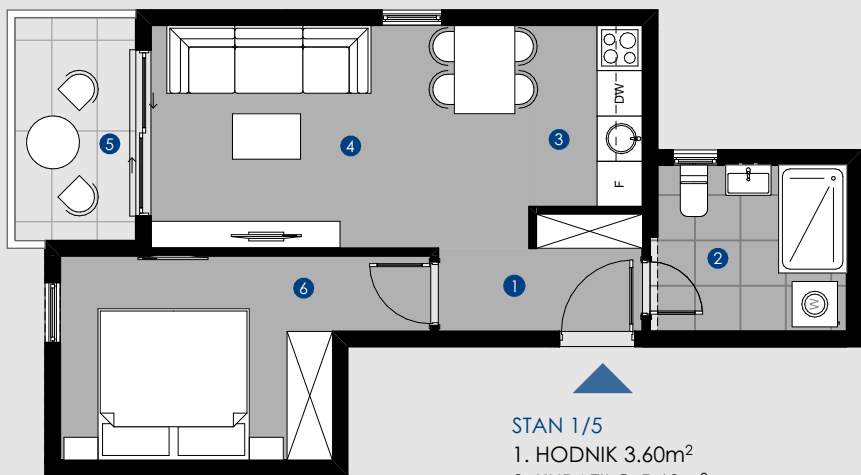


- STAN 1/4**
- 1.HODNIK 6.70m<sup>2</sup>
  - 2.KUHINJA 4.30m<sup>2</sup>
  - 3.DNEVNA SOBA 18.20m<sup>2</sup>
  - 4.TERASA 6.70m<sup>2</sup>
  - 5.SPAVAĆA SOBA 12.30m<sup>2</sup>
  - 6.KUPATILO 5.00m<sup>2</sup>
- UKUPNO 53.20m<sup>2</sup>**



1/5

43.25 M<sup>2</sup>



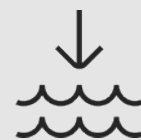
**STAN 1/5**

- 1. HODNIK 3.60m<sup>2</sup>
- 2. KUPATILO 5.60m<sup>2</sup>
- 3. KUHINJA 3.60m<sup>2</sup>
- 4. DNEVNA SOBA 14.75m<sup>2</sup>
- 5. TERASA 4.70m<sup>2</sup>
- 6. SPAVAĆA SOBA 11.00m<sup>2</sup>
- UKUPNO 43.25m<sup>2</sup>**



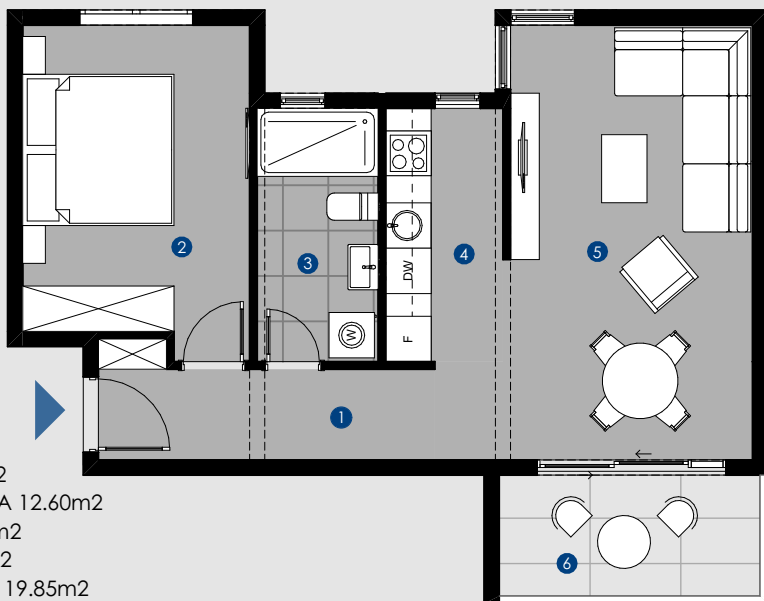






2/1

54.25 M2



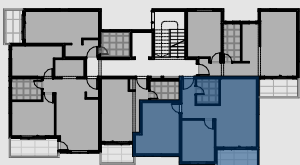
**STAN 2/1**

- 1.HODNIK 5.70m<sup>2</sup>
- 2.SPAVAĆA SOBA 12.60m<sup>2</sup>
- 3.KUPATILO 5.40m<sup>2</sup>
- 4.KUHINJA 5.20m<sup>2</sup>
- 5.DNEVNA SOBA 19.85m<sup>2</sup>
- 6.TERASA 5.50m<sup>2</sup>
- UKUPNO 54.25m<sup>2</sup>**



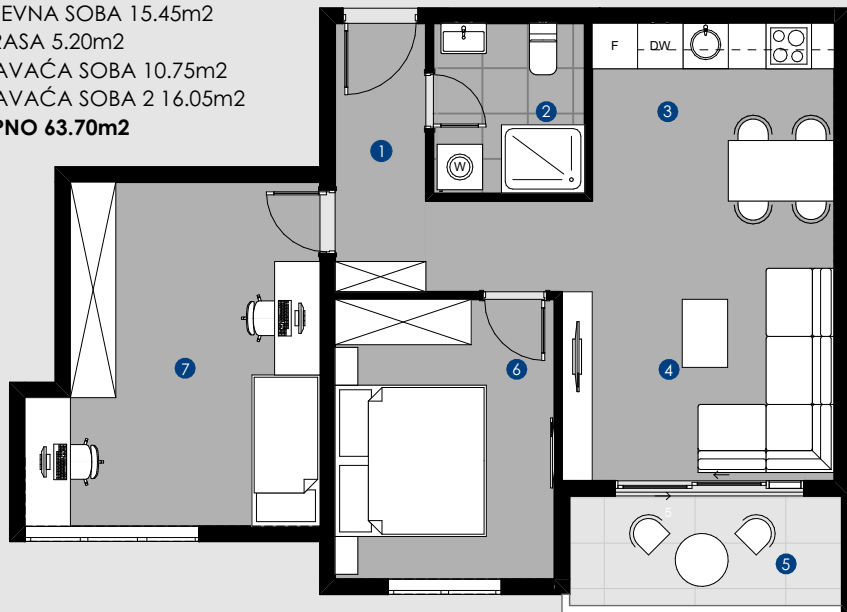
2/2

63.70 M2



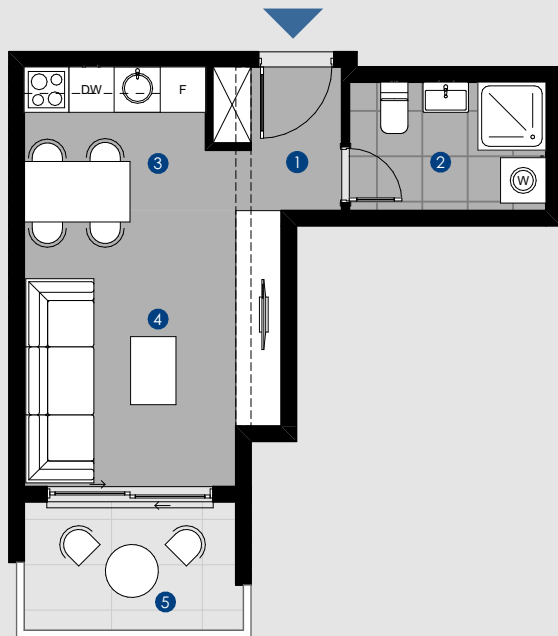
STAN 2/2

- 1.HODNIK 4.25m2
  - 2.KUPATILO 4.50m2
  - 3.KUHINJA 7.50m2
  - 4.DNEVNA SOBA 15.45m2
  - 5.TERASA 5.20m2
  - 6.SPAVAĆA SOBA 10.75m2
  - 7.SPAVAĆA SOBA 2 16.05m2
- UKUPNO 63.70m2**



2/3

29.00 M2

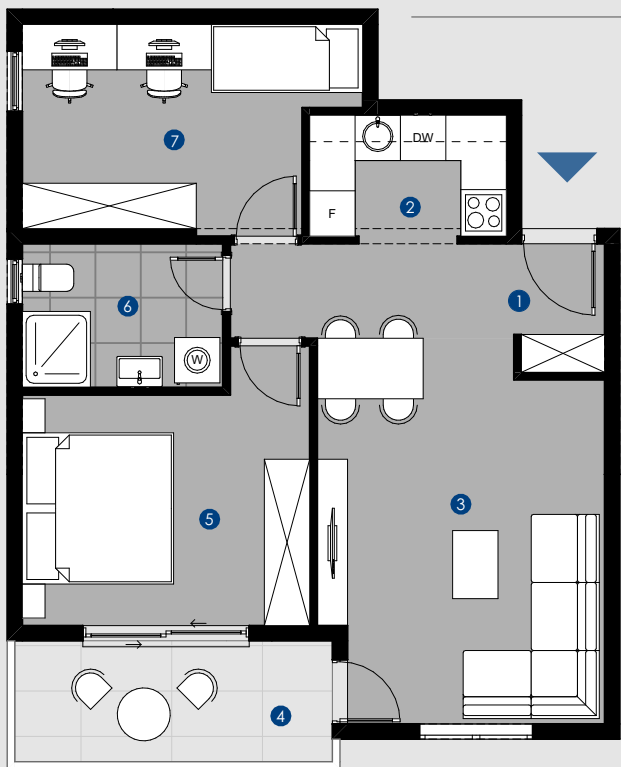
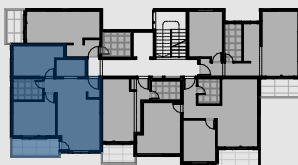


- STAN 2/3**  
1.HODNIK 2.80m<sup>2</sup>  
2.KUPATILO 4.40m<sup>2</sup>  
3.KUHINJA 5.05m<sup>2</sup>  
4.DNEVNA SOBA 11.95m<sup>2</sup>  
5.TERASA 4.80m<sup>2</sup>  
**UKUPNO 29.00m<sup>2</sup>**



2/4

64.25 M2



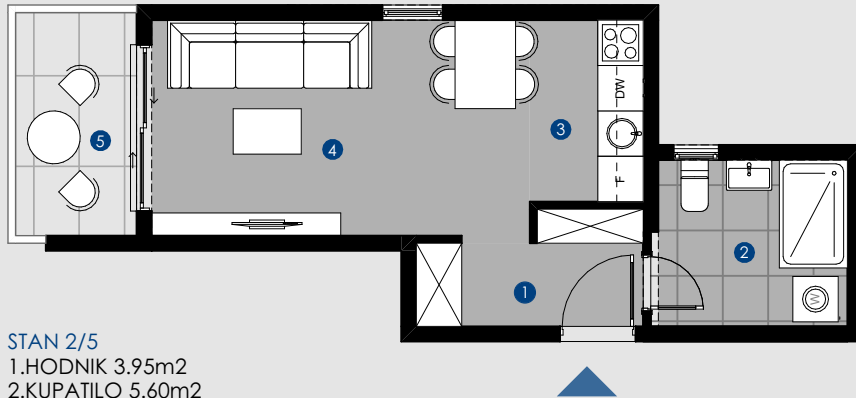
**STAN 2/4**

- 1.HODNIK 6.75m<sup>2</sup>
  - 2.KUHINJA 4.30m<sup>2</sup>
  - 3.DNEVNA SOBA 18.20m<sup>2</sup>
  - 4.TERASA 6.70m<sup>2</sup>
  - 5.SPAVAĆA SOBA 12.30m<sup>2</sup>
  - 6.KUPATILO 5.00m<sup>2</sup>
  - 7.SPAVAĆA SOBA 2 11.00m<sup>2</sup>
- UKUPNO 64.25m<sup>2</sup>**



2/5

32.20 M2



**STAN 2/5**

- 1.HODNIK 3.95m<sup>2</sup>
- 2.KUPATILO 5.60m<sup>2</sup>
- 3.KUHINJA 3.60m<sup>2</sup>
- 4.DNEVNA SOBA 14.35m<sup>2</sup>
- 5.TERASA 4.70m<sup>2</sup>
- UKUPNO 32.20m<sup>2</sup>**







